



www.futurestechs.co.uk



Clive Lambert



clive@futurestechs.co.uk



@Futurestechs

FUTURES TECHS

What's in the Futurestechs' Reports?



10 times Winner since 2010

Energy - Metals - Equity Indices – Bond Futures - Forex

Established 2000

Proud supporter of



The Charts



FUTURES
TECHS

8th May 2024

"Automated" Levels

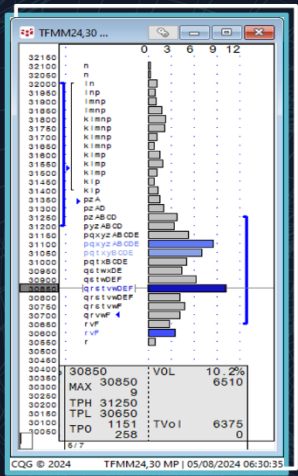
Open	31.53
High	32.13
Low	30.55
Close	30.71
Change	-4%
R3	33.29
R2	32.71
R1	31.71
PP	31.13
S1	30.13
S2	29.55
S3	28.55
Y VAH	31.25
Y POC	30.85
Y VAL	30.65
10 SMA	30.01
20 SMA	30.38
50 SMA	28.31
ATR	1.57
RSI	55

Futurestechs' Levels & SkewBar

R7	34.56
R6	33.86-98
R5	32.89
R4	32.585
R3	32.13-21
R2	31.405
R1	30.85
S1	30.55
S2	29.97
S3	29.775
S4	29.465
S5	29.05
S6	28.69
S7	28.455

Dutch TTF Gas - June '24

www.futurestechs.co.uk



- Short term Trend: Neutral - Bullish
- Medium term Trend: Neutral
- Yesterday's candle: Friday's low was 30.00 so although it was a red candle the bulls held 29.97. This level held again on Monday morning, and we then saw a rally to 32.21. - Yesterday was red with weakness seen back to 30.55 where we found some buyers, back to 31.39 where the sellers returned. We're still above 29.97, so still giving the bulls the benefit of the doubt.
- Fibonacci says: 35.23 is 38.2% of the weakness seen from last October to February. There is a gap just below here at 35.11. - Target?
- Moving Averages/Indicators/other: MACD flips back to long.



- Summary/Thoughts: Bulls making noises.
- Favoured trade(s) for today: Buy dips (while 29.97 stays below us).
- Bigger Picture thoughts and targets: June levels to watch: 33.98 and 35.11-24 to the upside. 29.97, 27.90 then 25.36 to the downside.

Purple = Marabuzo lines, Green = Fibonacci levels, Blue = Market Profile levels, Orange = Trendlines/Chart Pattern levels

Candlestick Chart; generally daily...

Green candles are days where the market closes higher than where it opened, so bullish days.

Red candles are formed when the market closes below it's open.

Sometimes we will post "day session only" charts that strip out the overnight price action. Important gap levels can be gleaned from these charts.

“Candlestick Cheat Sheet”

FUTURES
techs

CANDLESTICKS “CHEAT SHEET”

Upper Shadow ← high
Real Body ← open
Lower Shadow ← close
← low

Japanese Candlesticks are constructed using the open, high, low and close of the timeframe specified. The difference between the open and close gives us the “Real Body”. The extremes of the day give us the “tails” or “wicks” of the candle, known as the upper and lower shadows

Bullish Marabuzo
Bullish: Big range day where the market opened near the low and closed near the high. The Bulls were in charge for the majority of the session

Bearish Marabuzo
Bearish: Big range day where the market opened near the high and closed near its lows. The Bears were in charge for the majority of the session

Shooting Star
Bearish when seen in an uptrend. The upper shadow is at least twice the length of the real body, which is at the bottom of the day’s range

Hammer
Bullish reversal if seen in a downtrend. The lower shadow must be at least twice the length of the short real body, which is at the top of the candle’s range

Inverted Hammer
A Bullish pattern if seen in a downtrend. Requires confirmation as it’s not generally the strongest of signals.

Hanging Man
The same shape as a Hammer but Bearish in an Uptrend. This also needs further confirmation. Not generally the strongest of reversal patterns.

FUTURES
techs

CANDLESTICKS “CHEAT SHEET”

Doji
Indecision: The open and close at the same level proves that buyers and sellers are balancing each other out. Signals a reversal if seen in a solid up or down trend.

Harami
A small real body contained within the previous day’s real body signals a reversal if the first real body is in line with the underlying trend. Shown is a Bullish Harami. Not usually a strong signal.

Bullish Engulfing Pattern
Bullish if seen during a downtrend. The second open/white candle must totally envelop the real body of the first. Generally a strong reversal pattern.

Bearish Engulfing Pattern
Bearish when you’re in an uptrend. The real body of the second filled/dark candle engulfs the real body of the first. A strong reversal signal especially if there is better volume on the second day.

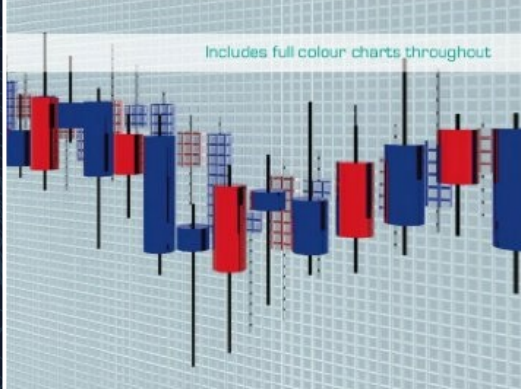
Piercing Pattern
Bullish if seen during a downtrend. Gaps lower on the second day, then rallies strongly into the close. Has to close above the first candle’s real body midpoint.

Dark Cloud Cover
Bearish if seen during an uptrend. Gaps higher on the second day, then sells off heavily into the close. Has to close below the first candle’s real body midpoint.

Morning Star
A significant reversal if seen in a downtrend. It has three candles, the first two are a “Star”, the third confirms, closing well into the real body of the first candle

Evening Star
An important Bearish Pattern if seen in an uptrend. The middle candle has a small real body which gaps way from the first. The third candle confirms the change of sentiment

Includes full colour charts throughout



CANDLESTICK CHARTS

An introduction to using candlestick charts

Clive Lambert

Fin

If you would like a “hard copy” of our world famous Cheat Sheet please let us know.

Or buy a copy of my book!

https://www.amazon.co.uk/Candlestick-Charts-introduction-candlestick-charts/dp/1905641745/ref=sr_1_3?dchild=1&keywords=candlestick+charts&qid=1627463008&sr=8-3

The Charts

www.futurestechs.co.uk

Dutch TTF Gas - June '24

FUTURES
TECHS

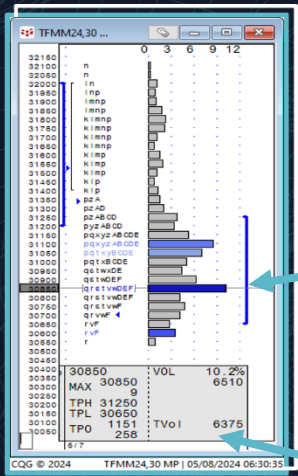
8th May 2024

"Automated" Levels

Open	31.53
High	32.13
Low	30.55
Close	30.71
Change	-4%
R3	33.29
R2	32.71
R1	31.71
PP	31.13
S1	30.13
S2	29.55
S3	28.55
Y VAH	31.25
Y POC	30.85
Y VAL	30.65
10 SMA	30.01
20 SMA	30.38
50 SMA	28.31
ATR	1.57
RSI	55

Futurestechs' Levels & SkewBar

R7	34.56
R6	33.86-98
R5	32.89
R4	32.585
R3	32.13-21
R2	31.405
R1	30.85
S1	30.55
S2	29.97
S3	29.775
S4	29.465
S5	29.05
S6	28.69
S7	28.455



- Short term Trend: Neutral - Bullish
- Medium term Trend: Neutral
- Yesterday's candle: Friday's low was 30.00 so although it was a red candle the bulls held 29.97. This level held again on Monday morning, and we then saw a rally to 32.21. - Yesterday was red with weakness seen back to 30.55 where we found some buyers, back to 31.39 where the sellers returned. We're still above 29.97, so still giving the bulls the benefit of the doubt.
- Fibonacci says: 35.23 is 38.2% of the weakness seen from last October to February. There is a gap just below here at 35.11. - Target?
- Moving Averages/Indicators/other: MACD flip back to long.



- Summary/Thoughts: Bulls making noises.
- Favoured trade(s) for today: Buy dips (while 29.97 stays below us).
- Bigger Picture thoughts and targets: June levels to watch: 33.98 and 35.11-24 to the upside. 29.97, 27.90 then 25.36 to the downside.

Purple = Marabuzo lines, Green = Fibonacci levels, Blue = Market Profile levels, Orange = Trendlines/Chart Pattern levels

Market Profile chart:
Shows the previous
day's Market Profile.

The long blue line on the
histogram is the TPO POC.

Blue horizontal lines on these
charts are "Single Print
Vacuum" support or
resistance levels.

The small box below shows
the following values:

TPH – Value Area high using
TPO count

TPL – Value Area low using
TPO count

Acronym buster! – Market Profile

- HVN – High Volume Node – Price at which the most volume has gone through
- LVN – Low Volume Node – Price at which very little volume has gone through
- CHVN – Composite High Volume Node – As above but on the “Composite” profiles; those that combine a number of days’ price action together; usually 20 days in our analysis
- CLVN – Composite Low Volume Node – an area of low volume on the composite Profiles
- VAL – Value Area Low
- VAH – Value Area High
- (TPO) POC – Point of Control – The price where the most time was spent on a particular day.
- VPOC – Volume Point of Control – As above but the price where the most volume went through.
- Naked VPOC – A previous VPOC that hasn’t been touched since, so has been “left naked”, above or below.
- SPV – Single Print Vacuum – Similar to an LVN/CLVN. A price or price area where action was only seen during one half an hour period, leaving just one letter (TPO) on the Profile.

* For more on these definitions please contact us and we can send you something, or arrange a training course!

The Levels



FUTURES
TECHS

8th May 2024

“Automated” Levels

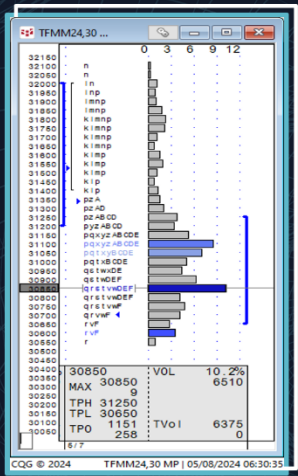
Open	31.53
High	32.13
Low	30.55
Close	30.71
Change	-4%
R3	33.29
R2	32.71
R1	31.71
PP	31.13
S1	30.13
S2	29.55
S3	28.55
Y VAH	31.25
Y POC	30.85
Y VAL	30.65
10 SMA	30.01
20 SMA	30.38
50 SMA	28.31
ATR	1.57
RSI	55

Futurestechs' levels & SkewBar

R7	34.56
R6	33.86-98
R5	32.89
R4	32.585
R3	32.13-21
R2	31.405
R1	30.85
S1	30.55
S2	29.97
S3	29.775
S4	29.465
S5	29.05
S6	28.69
S7	28.455

Dutch TTF Gas - June '24

www.futurestechs.co.uk



- Short term Trend: Neutral - Bullish
- Medium term Trend: Neutral
- Yesterday's candle: Friday's low was 30.00 so although it was a red candle the bulls held 29.97. This level held again on Monday morning, and we then saw a rally to 32.21. - Yesterday was red with weakness seen back to 30.55 where we found some buyers, back to 31.39 where the sellers returned. We're still above 29.97, so still giving the bulls the benefit of the doubt.
- Fibonacci says: 35.23 is 38.2% of the weakness seen from last October to February. There is a gap just below here at 35.11. - Target?
- Moving Averages/Indicators/other: MACD flips back to long.



- Profile setup/levels: 31.405 is vacuum resistance and a pivotal level yesterday.
- 20 day CHVN: 28.00
- Naked VPOCs below: 27.30, 26.00, 24.85
- Naked VPOCs above: None.
- SPVs in play below: 29.775, 29.05, 25.315.
- SPVs in play above: 31.405, 32.89

- Summary/Thoughts: Bulls making noises.
- Favoured trade(s) for today: Buy dips (while 29.97 stays below us).
- Bigger Picture thoughts and targets: June levels to watch: 33.98 and 35.11-24 to the upside. 29.97, 27.90 then 25.36 to the downside.

Purple = Marabuzo lines, Green = Fibonacci levels, Blue = Market Profile levels, Orange = Trendlines/Chart Pattern levels

“Manual” levels; from our Analysts' daily review.

Purple = Marabuzo lines, Green = Fibonacci levels, Blue = Market Profile levels, Orange = Trendlines/Chart Pattern levels

Levels in bold are deemed most important.

If a level is in brackets it means it could be support or resistance.

A level with a “*” next to it is an all time high/low.

The "SkewBar"



FUTURES
TECHS

8th May 2024

"Automated" Levels

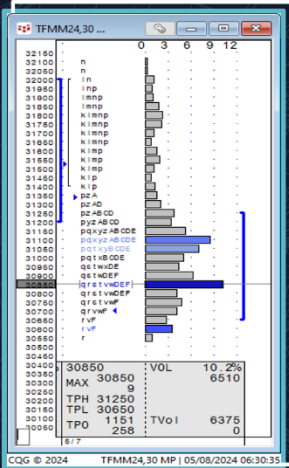
Open	31.53
High	32.13
Low	30.55
Close	30.71
Change	-4%
R3	33.29
R2	32.71
R1	31.71
PP	31.13
S1	30.13
S2	29.55
S3	28.55
Y VAH	31.25
Y POC	30.85
Y VAL	30.65
10 SMA	30.01
20 SMA	30.38
50 SMA	28.31
ATR	1.57
RSI	55

Futurestechs' levels & SkewBar

R7	34.56
R6	33.86-98
R5	32.89
R4	32.585
R3	32.13-21
R2	31.405
R1	30.85
S1	30.55
S2	29.97
S3	29.775
S4	29.465
S5	29.05
S6	28.69
S7	28.455

Dutch TTF Gas - June '24

www.futurestechs.co.uk



- Short term Trend: Neutral - Bullish
- Medium term Trend: Neutral
- Yesterday's candle: Friday's low was 30.00 so although it was a red candle the bulls held 29.97. This level held again on Monday morning, and we then saw a rally to 32.21. - Yesterday was red with weakness seen back to 30.55 where we found some buyers, back to 31.39 where the sellers returned. We're still above 29.97, so still giving the bulls the benefit of the doubt.
- Fibonacci says: 35.23 is 38.2% of the weakness seen from last October to February. There is a gap just below here at 35.11. - Target?
- Moving Averages/Indicators/other: MACD flips back to long.



- Profile setup/levels: 31.405 is vacuum resistance and a pivotal level yesterday.
- 20 day CHVN: 28.00.
- Naked VPOCs below: 27.30, 26.00, 24.85
- Naked VPOCs above: None.
- SPVs in play below: 23.75, 29.05, 25.36
- SPVs in play above: 31.405, 32.89

- Summary/Thoughts: Bulls making noises.
- Favoured trade(s) for today: Buy dips (while 29.97 stays below us).
- Bigger Picture thoughts and targets: June levels to watch: 33.98 and 35.11-24 to the upside. 29.97, 27.90 then 25.36 to the downside.

Purple = Marabuzo lines, Green = Fibonacci levels, Blue = Market Profile levels, Orange = Trendlines/Chart Pattern levels

On our Futures reports we post 7 support and 7 resistance levels and also our very own "invention"; the "SkewBar"; coloured in Green, Grey and Red.

This is a levels based short term trend indicator.


Green = Bullish

Grey = Neutral

Red = Bearish

So for this report we are Bullish above 29.97, turning bearish if 28.69 breaks, Neutral between these two levels.

The Levels



**FUTURES
TECHS**

Dutch TTF Gas - June '24

www.futurestechs.co.uk

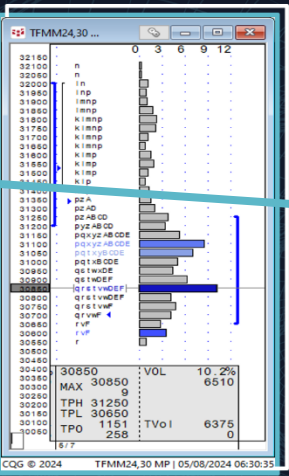
8th May 2024

"Automated" Levels

Open	31.53
High	32.13
Low	30.55
Close	30.71
Change	-4%
R3	33.29
R2	32.71
R1	31.71
PP	31.13
S1	30.13
S2	29.55
S3	28.55
Y VAH	31.25
Y POC	30.85
Y VAL	30.65
10 SMA	30.01
20 SMA	30.38
50 SMA	28.31
ATR	1.57
RSI	55


Futurestechs' Levels & SkewBar

R7	34.56
R6	33.86-98
R5	32.89
R4	32.585
R3	32.13-21
R2	31.405
R1	30.85
S1	30.55
S2	29.97
S3	29.775
S4	29.465
S5	29.05
S6	28.69
S7	28.455



TFMM24,30 MP | 05/08/2024 06:30:35

- Short term Trend: Neutral - Bullish
- Medium term Trend: Neutral
- Yesterday's candle: Friday's low was 30.00 so although it was a red candle the bulls held 29.97. This level held again on Monday morning, and we then saw a rally to 32.21. - Yesterday was red with weakness seen back to 30.55 where we found some buyers, back to 31.39 where the sellers returned. We're still above 29.97, so still giving the bulls the benefit of the doubt.
- Fibonacci says: 35.23 is 38.2% of the weakness seen from last October to February. There is a gap just below here at 35.11. - Target?
- Moving Averages/Indicators: MACD flips back to long.



Custom TFMM24 - Dutch TTF Gas Basefeed, Jun 24, Daily

- Profile setup/levels: 31.405 is vacuum resistance and a pivotal level yesterday.
- 20 day CHVN: 28.00.
- Naked VPOCs below: 27.30, 26.00, 24.85
- Naked VPOCs above: None.
- SPVs in play below: 29.775, 29.05, 25.315.
- SPVs in play above: 31.405, 32.89

- Summary/Thoughts: Bulls making noises.
- Favoured trade(s) for today: Buy dips (while 29.97 stays below us).
- Bigger Picture thoughts and targets: June levels to watch: 33.98 and 35.11-24 to the upside. 29.97, 27.90 then 25.36 to the downside.

Purple = Marabuzo lines, Green = Fibonacci levels, Blue = Market Profile levels, Orange = Trendlines/Chart Pattern levels

"Automated" levels:

As it says, all of these levels are generated by CQG and are as follows:

Open, high, Low, Close, Change – Self explanatory

The Levels

FUTURES TECHS

8th May 2024

"Automated" Levels

Open	31.53
High	32.13
Low	30.55
Close	30.71
Change	-4%
R3	33.29
R2	32.71
R1	31.71
PP	31.13
S1	30.13
S2	29.55
S3	28.55
Y VAH	31.25
Y POC	30.85
Y VAL	30.65
10 SMA	30.01
20 SMA	30.38
50 SMA	28.31
ATR	1.57
RSI	55

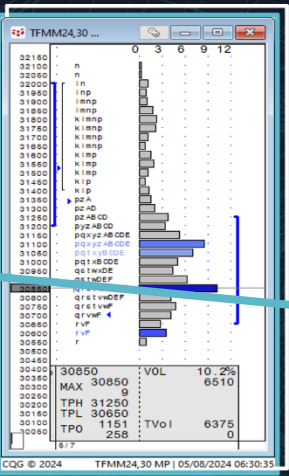

Futurestechs' Levels & SkewBar

R7	34.56
R6	33.86-98
R5	32.89
R4	32.585
R3	32.13-21
R2	31.405
R1	30.85
S1	30.55
S2	29.97
S3	29.775
S4	29.465
S5	29.05
S6	28.69
S7	28.455

Dutch TTF Gas - June '24

www.futurestechs.co.uk

- Short term Trend: Neutral - Bullish
- Medium term Trend: Neutral
- Yesterday's candle: Friday's low was 30.00 so although it was a red candle the bulls held 29.97. This level held again on Monday morning, and we then saw a rally to 32.21. - Yesterday was red with weakness seen back to 30.55 where we found some buyers, back to 31.39 where the sellers returned. We're still above 29.97, so still giving the bulls the benefit of the doubt.
- Fibonacci says: 35.23 is 38.2% of the weakness seen from last October to February. There is a gap just below here at 35.11. - Target?
- Moving Averages/Indicators/other: MACD flips back to long.

- Profile setup/levels: 31.405 is vacuum resistance and a pivotal level yesterday.
- 20 day CHVN: 28.00.
- Naked VPOCs below: 27.30, 26.00, 24.85
- Naked VPOCs above: None.
- SPVs in play below: 29.775, 29.05, 25.315.
- SPVs in play above: 31.405, 32.89

Summary/Thoughts: Bulls making noises.

Favoured trade(s) for today: Buy dips (while 29.97 stays below us).

Bigger Picture thoughts and targets: June levels to watch: 33.98 and 35.11-24 to the upside. 29.97, 27.90 then 25.36 to the downside.

Purple = Marabuzo lines, Green = Fibonacci levels, Blue = Market Profile levels, Orange = Trendlines/Chart Pattern levels

"Automated" levels:

As it says, all of these levels are generated by CQG and are as follows:

"Pivot Points": 7 levels

- R3 = H + 2(PP - L)
- R2 = PP + (H - L)
- R1 = (2 x PP) - L
- PP = (H + L + C) / 3
- S1 = (2 x PP) - H
- S2 = PP - (H - L)
- S3 = L - 2(H - PP)

Pivot Points were commonly used in the days of Pit trading but are not (IMO) so relevant now, although are still referenced by many traders, hence we include them in our reports!

The Levels

www.futurestechs.co.uk

Dutch TTF Gas - June '24

FUTURES
TECHS



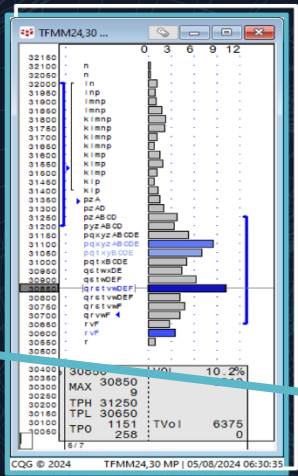
8th May 2024

"Automated" Levels

Open	31.53
High	32.13
Low	30.55
Close	30.71
Change	-4%
R3	33.29
R2	32.71
R1	31.71
PP	31.13
S1	30.13
S2	29.55
S3	28.55
Y VAH	31.25
Y POC	30.85
Y VAL	30.65
10 SMA	30.01
20 SMA	30.38
50 SMA	28.31
ATR	1.57
RSI	55

Futurestechs' Levels & SkewBar

R7	34.56
R6	33.86-98
R5	32.89
R4	32.585
R3	32.13-21
R2	31.405
R1	30.85
S1	30.55
S2	29.97
S3	29.775
S4	29.465
S5	29.05
S6	28.69
S7	28.455



- Short term Trend: Neutral - Bullish
- Medium term Trend: Neutral
- Yesterday's candle: Friday's low was 30.00 so although it was a red candle the bulls held 29.97. This level held again on Monday morning, and we then saw a rally to 32.21. - Yesterday was red with weakness seen back to 30.55 where we found some buyers, back to 31.39 where the sellers returned. We're still above 29.97, so still giving the bulls the benefit of the doubt.
- Fibonacci says: 35.23 is 38.2% of the weakness seen from last October to February. There is a gap just below here at 35.11. - Target?
- Moving Averages/Indicators/other: MACD flips back to long.



- Profile setup/levels: 31.405 is vacuum resistance and a pivotal level yesterday.
- 20 day CHVN: 28.00.
- Naked VPOCs below: 27.30, 26.00, 24.85
- Naked VPOCs above: None.
- SPVs in play below: 29.775, 29.05, 25.315.
- SPVs in play above: 31.405, 32.89

- Summary/Thoughts: Bulls making noises.
- Favoured trade(s) for today: Buy dips (while 29.97 stays below us).
- Bigger Picture thoughts and targets: June levels to watch: 33.98 and 35.11-24 to the upside. 29.97, 27.90 then 25.36 to the downside.

Purple = Marabuzo lines, Green = Fibonacci levels, Blue = Market Profile levels, Orange = Trendlines/Chart Pattern levels

"Automated" levels:

As it says, all of these levels are generated by CQG and are as follows:

Market Profile Levels:

Y VAH – Yesterday's Value Area High – using volume (tick for FX) data

Y POC – Yesterday's Volume Point of Control (tick for FX)

Y VAL – Yesterday's Value Area Low using Volume (tick for FX) data

The Levels

8th May 2024

"Automated" Levels

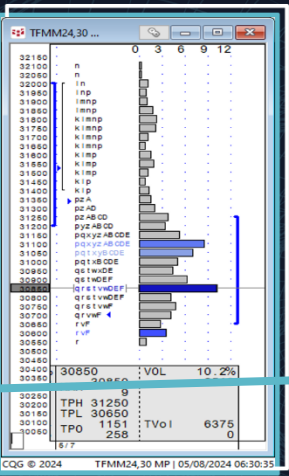
Open	31.53
High	32.13
Low	30.55
Close	30.71
Change	-4%
R3	33.29
R2	32.71
R1	31.71
PP	31.13
S1	30.13
S2	29.55
S3	28.55
Y VAH	31.25
Y POC	30.85
Y VAL	30.65
10 SMA	30.01
20 SMA	30.38
50 SMA	28.31
ATR	1.57
RSI	55

Futurestechs' Levels & SkewBar

R7	34.56
R6	33.86-98
R5	32.89
R4	32.585
R3	32.13-21
R2	31.405
R1	30.85
S1	30.55
S2	29.97
S3	29.775
S4	29.465
S5	29.05
S6	28.69
S7	28.455

Dutch TTF Gas - June '24


www.futurestechs.co.uk



Short term Trend: Neutral - Bullish

Medium term Trend: Neutral

- Yesterday's candle: Friday's low was 30.00 so although it was a red candle the bulls held 29.97. This level held again on Monday morning, and we then saw a rally to 32.21. - Yesterday was red with weakness seen back to 30.55 where we found some buyers, back to 31.39 where the sellers returned. We're still above 29.97, so still giving the bulls the benefit of the doubt.
- Fibonacci says: 35.23 is 38.2% of the weakness seen from last October to February. There is a gap just below here at 35.11. - Target?
- Moving Averages/Indicators/other: MACD flips back to long.



Profile setup/levels: 31.405 is vacuum resistance and a pivotal level yesterday.

20 day CHVN: 28.00.

Naked VPOCs below: 27.30, 26.00, 24.85

Naked VPOCs above: None.

SPVs in play below: 29.775, 29.05, 25.315.

SPVs in play above: 31.405, 32.89

Summary/Thoughts: Bulls making noises.

Favoured trade(s) for today: Buy dips (while 29.97 stays below us).

Bigger Picture thoughts and targets: June levels to watch: 33.98 and 35.11-24 to the upside. 29.97, 27.90 then 25.36 to the downside.

Legend: Purple = Marabuzo lines, Green = Fibonacci levels, Blue = Market Profile levels, Orange = Trendlines/Chart Pattern levels

"Automated" levels:

As it says, all of these levels are generated by CQG and are as follows:

Moving Averages:

10, 20 and 50 day Simple Moving Averages

If these are in bullish order they will all be green

If they are in bearish order they will all be red

The Levels



FUTURES
TECHS

8th May 2024

“Automated” Levels

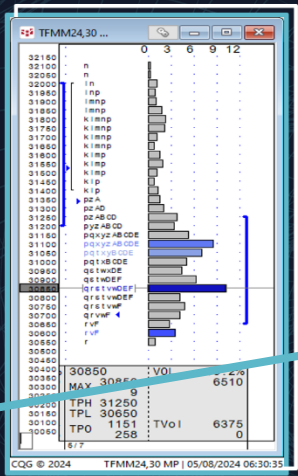
Open	31.53
High	32.13
Low	30.55
Close	30.71
Change	-4%
R3	33.29
R2	32.71
R1	31.71
PP	31.13
S1	30.13
S2	29.55
S3	28.55
Y VAH	31.25
Y POC	30.85
Y VAL	30.65
10 SMA	30.01
20 SMA	30.38
50 SMA	28.31
ATR	1.57
RSI	55

Futurestechs' Levels & SkewBar

R7	34.56
R6	33.86-98
R5	32.89
R4	32.585
R3	32.13-21
R2	31.405
R1	30.85
S1	30.55
S2	29.97
S3	29.775
S4	29.465
S5	29.05
S6	28.69
S7	28.455

Dutch TTF Gas - June '24

www.futurestechs.co.uk



- Short term Trend: Neutral - Bullish
- Medium term Trend: Neutral
- Yesterday's candle: Friday's low was 30.00 so although it was a red candle the bulls held 29.97. This level held again on Monday morning, and we then saw a rally to 32.21. - Yesterday was red with weakness seen back to 30.55 where we found some buyers, back to 31.39 where the sellers returned. We're still above 29.97, so still giving the bulls the benefit of the doubt.
- Fibonacci says: 35.23 is 38.2% of the weakness seen from last October to February. There is a gap just below here at 35.11. - Target?
- Moving Averages/Indicators/other: MACD flips back to long.



- Profile setup/levels: 31.405 is vacuum resistance and a pivotal level yesterday.
- 20 day CHVN: 28.00.
- Naked VPOCs below: 27.30, 26.00, 24.85
- Naked VPOCs above: None.
- SPVs in play below: 29.775, 29.05, 25.315.
- SPVs in play above: 31.405, 32.89

- Summary/Thoughts: Bulls making noises.
- Favoured trade(s) for today: Buy dips (while 29.97 stays below us).
- Bigger Picture thoughts and targets: June levels to watch: 33.98 and 35.11-24 to the upside. 29.97, 27.90 then 25.36 to the downside.

Purple = Marabuzo lines, Green = Fibonacci levels, Blue = Market Profile levels, Orange = Trendlines/Chart Pattern levels

“Automated” levels:

As it says, all of these levels are generated by CQG and are as follows:

ATR – Average True Range

This is (in simple terms) the average daily range over the last 10 days, and is used by traders to tell them whether you are experiencing a session of “average” or more extreme volatility.

The Levels

FUTURES TECHS

8th May 2024

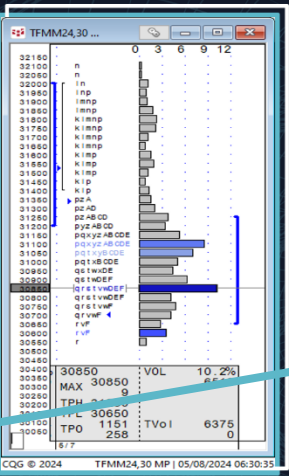
"Automated" Levels

Open	31.53
High	32.13
Low	30.55
Close	30.71
Change	-4%
R3	33.29
R2	32.71
R1	31.71
PP	31.13
S1	30.13
S2	29.55
S3	28.55
Y VAH	31.25
Y POC	30.85
Y VAL	30.65
10 SMA	30.01
20 SMA	30.38
50 SMA	28.31
ATR	1.57
RSI	55

Futurestechs' Levels & SkewBar

R7	34.56
R6	33.86-98
R5	32.89
R4	32.585
R3	32.13-21
R2	31.405
R1	30.85
S1	30.55
S2	29.97
S3	29.775
S4	29.465
S5	29.05
S6	28.69
S7	28.455

Dutch TTF Gas - June '24




• Short term Trend: Neutral - Bullish

• Medium term Trend: Neutral

• Yesterday's candle: Friday's low was 30.00 so although it was a red candle the bulls held 29.97. This level held again on Monday morning, and we then saw a rally to 32.21. - Yesterday was red with weakness seen back to 30.55 where we found some buyers, back to 31.39 where the sellers returned. We're still above 29.97, so still giving the bulls the benefit of the doubt.

• Fibonacci says: 35.23 is 38.2% of the weakness seen from last October to February. There is a gap just below here at 35.11. - Target?

• Moving Averages/Indicators/other: MACD flips back to long.



www.futurestechs.co.uk

• Profile setup/levels: 31.405 is vacuum resistance and a pivotal level yesterday.

• 20 day CHVN: 28.00.

• Naked VPOCs below: 27.30, 26.00, 24.85

• Naked VPOCs above: None.

• SPVs in play below: 29.775, 29.05, 25.315.

• SPVs in play above: 31.405, 32.89

• Summary/Thoughts: Bulls making noises.

• Favoured trade(s) for today: Buy dips (while 29.97 stays below us).

• Bigger Picture thoughts and targets: June levels to watch: 33.98 and 35.11-24 to the upside. 29.97, 27.90 then 25.36 to the downside.

• Purple = Marabuzo lines, Green = Fibonacci levels, Blue = Market Profile levels, Orange = Trendlines/Chart Pattern levels

"Automated" levels:

As it says, all of these levels are generated by CQG and are as follows:

RSI – Relative Strength Index "Momentum" study

Green = Overbought
Red = Oversold

The "theory" behind this is that a high reading for the RSI (anything over 75) says the market is get "overbought" and due a correction lower.

Conversely an RSI reading below 25 says the selling has maybe gone too far.

The Commentary



FUTURES
TECHS

8th May 2024

"Automated" Levels

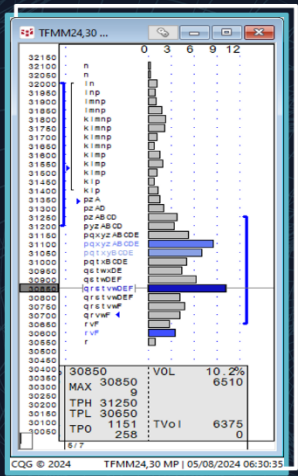
Open	31.53
High	32.13
Low	30.55
Close	30.71
Change	-4%
R3	33.29
R2	32.71
R1	31.71
PP	31.13
S1	30.13
S2	29.55
S3	28.55
Y VAH	31.25
Y POC	30.85
Y VAL	30.65
10 SMA	30.01
20 SMA	30.38
50 SMA	28.31
ATR	1.57
RSI	55

Futurestechs' levels & SkewBar

R7	34.56
R6	33.86-98
R5	32.89
R4	32.585
R3	32.13-21
R2	31.405
R1	30.85
S1	30.55
S2	29.97
S3	29.775
S4	29.465
S5	29.05
S6	28.69
S7	28.455

Dutch TTF Gas - June '24

www.futurestechs.co.uk



- Short term Trend: Neutral - Bullish
- Medium term Trend: Neutral
- Yesterday's candle: *Friday's low was 30.00 so although it was a red candle the bulls held 29.97. This level held again on Monday morning, and we then saw a rally to 32.21. - Yesterday was red with weakness seen back to 30.55 where we found some buyers, back to 31.39 where the sellers returned. We're still above 29.97, so still giving the bulls the benefit of the doubt.*
- Fibonacci says: *35.23 is 38.2% of the weakness seen from last October to February. There is a gap just below here at 35.11. - Target?*
- Moving Averages/Indicators/other: MACD flips back to long.



- Summary/Thoughts: Bulls making noises.
- Favoured trade(s) for today: Buy dips (while 29.97 stays below us).
- Bigger Picture thoughts and targets: June levels to watch: 33.98 and 35.11-24 to the upside. 29.97, 27.90 then 25.36 to the downside.

Purple = Marabuzo lines, Green = Fibonacci levels, Blue = Market Profile levels, Orange = Trendlines/Chart Pattern levels

Commentary:

All fairly self explanatory

Text in *Italics* is from previous days.

"Short term trend" is the 2-4 week trend on the daily chart

"Medium term trend" is the "bigger picture" direction on the weekly charts.



- There's plenty of information in our reports, not all of it obvious at first glance, so hopefully this will help you make the most of the service
- If you wish to learn more why not arrange an in-house training session?
- If you have any questions, or to discuss training opportunities, please get in touch on clive@futurestechs.co.uk